

# Unscramble

Name \_\_\_\_\_ Date \_\_\_\_\_

**Directions:** To answer the riddle, unscramble each word and write it in the squares. Then write the circled letters in order on the numbered spaces below.

taryre

① 

		5	9	11	
--	--	---	---	----	--

a blood vessel that moves oxygen-rich blood away from the heart toward the body's cells

aeht

② 

1	4			
---	---	--	--	--

the organ that pumps blood throughout the body

vreil

③ 

		3	7	
--	--	---	---	--

a large excretory organ that filters blood and helps with digestion

hmsotac

④ 

	12			2		6
--	----	--	--	---	--	---

the organ where food is mixed with chemicals and partially digested

crathea

⑤ 

				8		10
--	--	--	--	---	--	----

the windpipe through which air travels in and out of the lungs



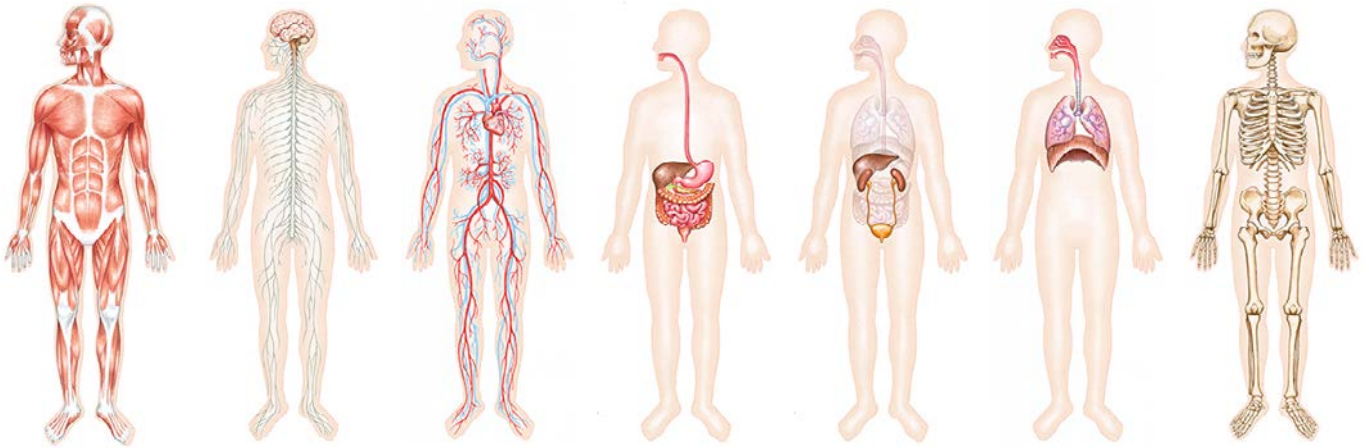
**Riddle:** Why didn't the teddy bear tell the doll the bad news?

**Answer:** He didn't \_\_\_\_\_.

1   2   3   4   5   6   7   8   9   10   11   12

**Materials:**

- scissors
- glue sticks



**Body Systems**

**Directions:** Below are some vocabulary terms from The Human Body unit. Cut apart the words with scissors. Then glue them into the correct group on the next page. Use the book for evidence to support your choices. The last box has been left blank for you to write a vocabulary term of your choice related to the human body.



arteries	blood	brain
cardiac muscle	diaphragm	heart
kidneys	large intestine	liver
lungs	nerves	pelvis
ribs	skeletal muscle	skull
small intestine	smooth muscle	spine
stomach	veins	

Name \_\_\_\_\_ Date \_\_\_\_\_

**Directions:** Glue the words you cut out into the groups where they best belong.



**Parts of the circulatory system**


**Parts of the respiratory system**




**Parts of the digestive system**


**Parts of the muscular system**


**Parts of the skeletal system**


**Parts of the nervous system**


**Parts of the excretory system**


**Paste your own vocabulary term here:**

--

If your vocabulary term belongs in one of the groups, write which one (if not, leave blank). \_\_\_\_\_

Use your vocabulary term in a complete sentence.

---

---

# Analogies/Fill in the Blank

Name \_\_\_\_\_ Date \_\_\_\_\_

**Directions:** Read the first pair of words or phrases and think about how they are related. Then choose the answer that shows the same relationship in the second pair of words.

1. **spine** is to **skeletal system** as **stomach** is to \_\_\_\_\_  
 a. respiratory system    b. digestive system    c. circulatory system    d. nervous system
2. **carry messages** is to **nervous system** as **move blood** is to \_\_\_\_\_  
 a. digestive system    b. excretory system    c. circulatory system    d. security system
3. **table** is to **wood** as **heart** is to \_\_\_\_\_  
 a. oxygen    b. smooth muscle    c. bone    d. cardiac muscle
4. **kidney** is to **waste** as **lungs** is to \_\_\_\_\_  
 a. vein    b. oxygen    c. carbon dioxide    d. blood
5. **knee** is to **knee pad** as **brain** is to \_\_\_\_\_  
 a. skull    b. cerebellum    c. spine    d. large intestine

**Directions:** Fill in each blank with the correct word from the list. Use each word once.

large intestine      lungs      muscles      nerves      spine

1. Thousands of \_\_\_\_\_ in the spinal cord carry messages between the brain and the rest of the body.
2. Oxygen enters the bloodstream through a pair of organs in the respiratory system called \_\_\_\_\_.
3. When food enters the \_\_\_\_\_, water is removed and absorbed by the body.
4. The \_\_\_\_\_ is the main support for the body and is part of the skeletal system.
5. When you run, different \_\_\_\_\_ in your legs contract and relax.

# Unscramble Answer Sheet

① a r t e r y  
5 9 11

② h e a r t  
1 4

③ l i v e r  
3 7

④ s t o m a c h  
12 2 6

⑤ t r a c h e a  
8 10

**Riddle:** Why didn't the teddy bear tell the doll the bad news?

**Answer:** He didn't h a v e t h e h e a r t .  
1 2 3 4 5 6 7 8 9 10 11 12

# Word Sort Answer Sheet

**Teacher notes:**

- There is no required sequence within each list.
- These lists are not intended to represent all possible items for each list.
- Encourage students to discuss and defend their choices; certain words may belong in more than one list.
- Students can glue the terms or use the grouping page as a work mat.

**Parts of the circulatory system**

arteries
blood
heart
veins

**Parts of the digestive system**

large intestine
small intestine
stomach

**Parts of the skeletal system**

pelvis
ribs
skull
spine

**Parts of the nervous system**

brain
nerves

**Parts of the respiratory system**

diaphragm
lungs

**Parts of the muscular system**

cardiac muscle
skeletal muscle
smooth muscle

**Parts of the excretory system**

kidneys
liver

**Paste your own vocabulary term here:**

*Vocabulary terms will vary but should be related to the human body.*

If your vocabulary term belongs in one of the groups, write which one (if not, leave blank).

*Answers will vary.*

Use your vocabulary term in a complete sentence.

*Sentences will vary but should demonstrate an understanding of the meaning of the vocabulary term.*

# Analogies/Fill in the Blank Answer Sheet

## Analogies

1. **b.** digestive system (part → whole)
  2. **c.** circulatory system (action → system it is part of)
  3. **d.** cardiac muscle (subject → what it is made of)
  4. **c.** carbon dioxide (subject → what it removes)
  5. **a.** skull (subject → outer protection)
- 

## Fill in the Blank

1. nerves
2. lungs
3. large intestine
4. spine
5. muscles